



MONARCH  
INSTITUTE



# Navigating Financial Statements

- Get the skills that employers really want.
- Unrivalled support. Delivered with care.
- Absolute flexibility. Your way, your terms.

Education for  
the real world

RTO Code - 22530

# Master financial statements. No accounting degree required.

Many organisations can appear successful despite having underlying structural problems. A simple financial assessment of the organisation's key statements can reveal the strengths and importantly, weaknesses of an organisation. In a management role, knowing the critical pieces of information from financial statements is important for sound decision making.

Any stakeholder whose role involves reading and acting on financial statements can benefit from this short course. Further career opportunities may include:

- Senior manager
- Business analyst
- Head of strategy
- Head of product and services
- Head of innovation

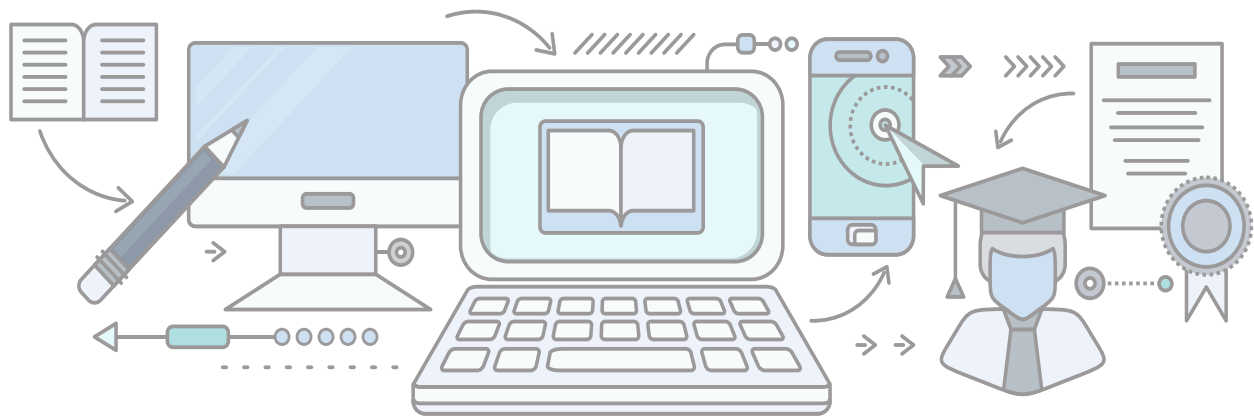
## What does the course cover?

You'll study nine short 'n smart topics:

- Rationale for financial statement analysis
- The balance sheet
- Using the balance sheet to assess financial health
- The profit and loss statement
- Asset management
- Profitability and debt management
- Market performance
- Cash flow statements
- Common-size statements

## Pathways

Once you've successfully completed Navigating Financial Statements, you might consider developing your new skills further with a Diploma of Accounting (FNS50215).



## Study online. With a difference.

This course has been developed to give you absolute flexibility. Study on your couch, on public transport, on your break at work, out in the park – wherever and whenever you like. The best part is, with Monarch Institute, 'online' doesn't mean 'alone'. You'll be backed by our trainers at every step along the way.

You'll get:

- Easy-to-follow course materials
- Videos
- Heaps of support from your course trainers (phone, email, Skype, Zoom)
- A dedicated admin team on hand to guide you
- Online assessments

## What is the course structure?

This course is delivered completely online. This means you'll access your learning and assessment resources using an online portal. You can access this anywhere and anytime.

We consistently receive feedback from our students telling us the course is very well structured and easy to follow. Of course, if you're having trouble wrapping your head around a concept or assessment piece, you can always reach out to your trainer for support.

## What is the course duration?

Most students complete this course within three months. Your completion time frame depends on your previous education, work experience, time availability and work rate.

## What are the entry requirements?

There are no formal entry requirements. Just bring your drive, motivation and passion for the industry. That said, if this is your first time studying at this level, we'll need to check your levels of English and maths before you enrol. People with disabilities are encouraged and supported to apply.

## Course costs

**Monarch's courses are competively priced.**

Check our website for the most up-to-date prices at [www.monarch.edu.au/courses](http://www.monarch.edu.au/courses) or call us on 1300 738 955.

# Why choose Monarch Institute?

**You need a different learning experience.  
We're ready to deliver.**

## Expertise

- ✓ Courses developed with leading academics and industry associations
- ✓ Delivered by brilliant trainers who work with corporate leaders
- ✓ Learn from professionals using real world case studies

## Flexibility

- ✓ Fit study around work, family, life.
- ✓ Start immediately, or down the track
- ✓ Flexible payment options

## Support

- ✓ Dedicated team of trainers and support staff on hand to guide you
- ✓ Up to date, easy to understand course materials
- ✓ Assessment turnaround in 5-7 business days with comprehensive trainer feedback

# Enrol today

Commence your Navigating Financial Statements course with Monarch Institute today to take the next step forward in your career.



To discuss the course that's right for you call  
**1300 738 955**



To find out more information email  
**info@monarch.edu.au**



To enrol, visit our website  
**www.monarch.edu.au**

