



# PRINCE2 Agile<sup>®</sup> Foundation and Practitioner courses

**PRINCE2 Agile<sup>®</sup> courses combine a more flexible approach to project management and provides a greater capacity for review within projects.**

In this style of PRINCE2<sup>®</sup> you'll learn a methodology that focusses on short increments and frequent deliveries, continuous involvement of staff across different roles, and a cooperative approach.

## What will I learn?

By the end of the PRINCE2 Agile Foundation and Practitioner course you should:

- ✓ Understand the basic concepts of common agile ways of working
- ✓ Understand the purpose and context for combining PRINCE2 and the agile way of working
- ✓ Be able to apply and evaluate the focus areas to a project in an agile context
- ✓ Be able to fix and flex the six aspects of a project in an agile context
- ✓ Be able to tailor the PRINCE2 principles, themes, processes and management products to a project in an agile context
- ✓ Be fully prepared to sit the PRINCE2 Agile Foundation and Practitioner examinations

## Duration

The combined PRINCE2 Agile Foundation and Practitioner course will take approximately 16 hours to complete.

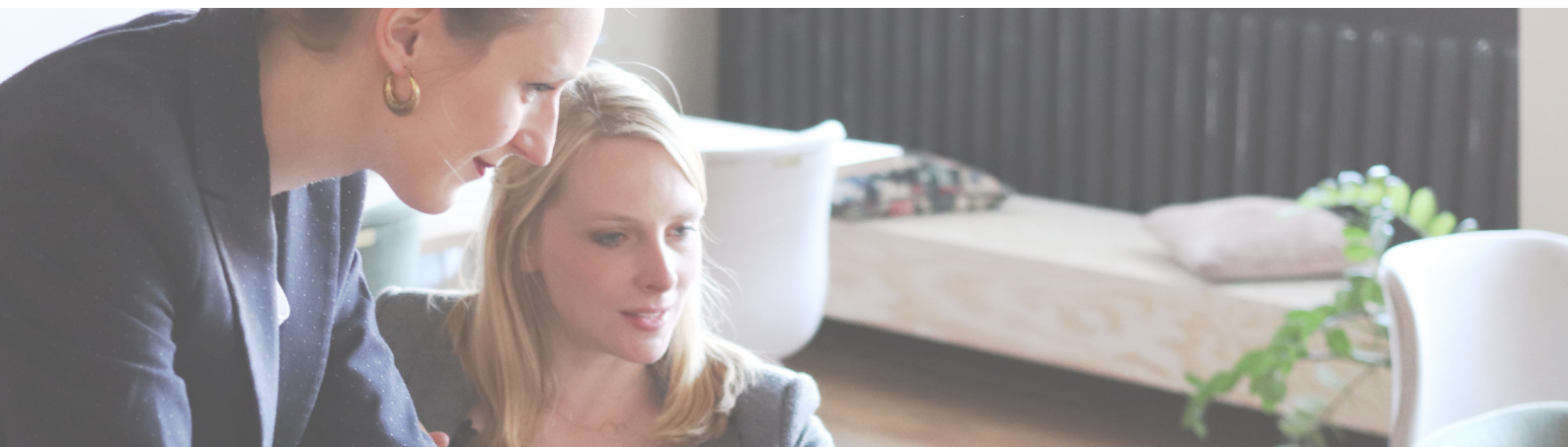
## Who is it for?

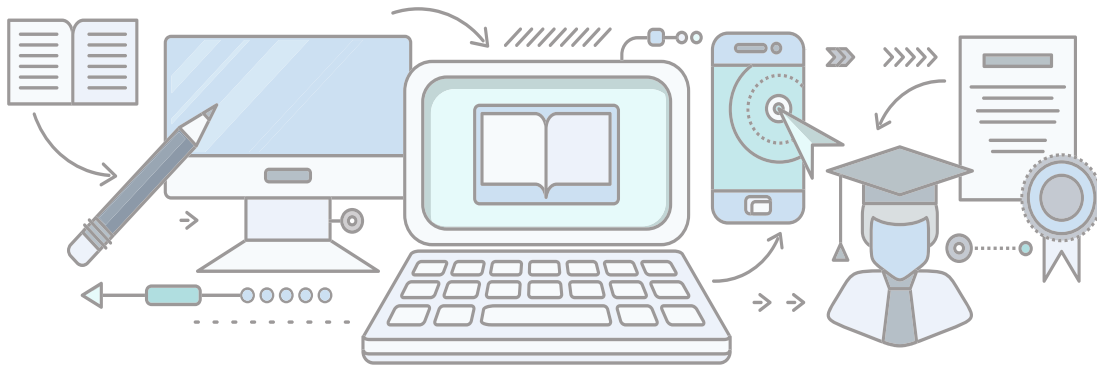
- Project Managers
- Program Managers
- Project Administrators
- Project Coordinators
- Project Management Support Service Managers
- Program Office Managers
- Heads of Change
- CIOs

## What's included?

- ✓ 12 months' online access to our accredited PRINCE2 Agile Foundation and Practitioner course
- ✓ PRINCE2 Foundation and Practitioner exam simulators
- ✓ PRINCE2 Agile Foundation and Practitioner exam simulator
- ✓ Official PRINCE2 Agile manual
- ✓ PRINCE2 Agile Foundation and Practitioner exams

In partnership with





## Components

The course consists of the following modules

1. Course overview
2. PRINCE2 Agile overview
3. Themes in an agile setting
4. Processes in an agile setting
5. Areas of focus
6. Scrum, Kanban and Lean Start-up
7. Further considerations
8. Exam simulator
9. PRINCE2 Agile case study and activities

## Pre-Requisites

There are no formal pre-requisites for taking the Foundation exam. However, to take the PRINCE2 Agile Practitioner examination, you must hold any of the following certifications:

### Foundation Themes

- ✓ PRINCE2 Agile Foundation
- ✓ PRINCE2 Foundation
- ✓ Project Management Professional (PMP)®
- ✓ Certified Associate in Project Management (CAPM)®
- ✓ IPMA Level A® (Certified Projects Director)
- ✓ IPMA Level B® (Certified Senior Project Manager)
- ✓ IPMA Level C® (Certified Project Manager)
- ✓ IPMA Level D® (Certified Project Management Associate)

All PRINCE2® Foundation and Practitioner, and PRINCE2 Agile® Foundation and Practitioner courses on this page are offered by ILX Group an ATO of AXELOS Limited. PRINCE2® and PRINCE2 Agile® are registered trademarks of AXELOS Limited, used under permission of AXELOS Limited. All rights reserved.

## Exams

### PRINCE2 Agile Foundation exam

- One-hour
- Multiple-choice
- 50 questions each worth one mark
- 28 marks or more required to pass out of 50 questions – 55% pass mark
- Closed book

### PRINCE2 Agile Practitioner exam

- Objective testing
- 50 questions each worth one mark
- 30 marks or more required to pass out of 50 questions – 60% pass mark
- Two-and-a-half hours (150 minutes) duration, no additional reading time
- Open book exam (official PRINCE2 Agile guide only)

Exams are taken online via remote proctor.

PMP® and CAPM® are registered marks of the Project Management Institute, Inc.  
PMI® is a registered mark of the Project Management Institute, Inc.

## Enrol today

Commence your Monarch Institute course today to take the next step forward in your career.

Education for  
the real world



To discuss the course that's right for you call **1300 738 955**



To find out more information email **info@monarch.edu.au**



To enrol, visit our website **www.monarch.edu.au**

