



PRINCE2® Foundation and Practitioner courses

Learn accredited PRINCE2 Foundation and Practitioner courses with all the training and materials you need to get accredited in the world's most recognised project management methodology.

The PRINCE2 Foundation introduces you to the PRINCE2 method whilst the Practitioner teaches you to apply it practically to the running and managing of a project within a PRINCE2 environment.

What will I learn?

By the end of the PRINCE2 Foundation and Practitioner courses you should be able to:

- ✓ Understand key concepts relating to projects and PRINCE2
- ✓ Understand how the PRINCE2 principles underpin the PRINCE2 method
- ✓ Understand the PRINCE2 themes and how they are applied throughout the project
- ✓ Understand the PRINCE2 processes and how they are carried out throughout the project
- ✓ Apply the PRINCE2 principles in context
- ✓ Apply and tailor relevant aspects of PRINCE2 themes in context
- ✓ Apply and tailor relevant aspects of PRINCE2 processes in context

Duration

The combined PRINCE2 Foundation and Practitioner courses will take approximately 32 hours to complete.

Who is it for?

- Project board members (e.g. Senior Responsible Owners)
- Team managers (e.g. Product Delivery Managers)
- Project assurance (e.g. Business Change Analysts)
- Operational line managers/staff
- Project support (e.g. Project and Programme Office personnel)

What's included?

- ✓ 12 months online access to our accredited PRINCE2 Foundation and Practitioner courses
- ✓ Training support, plus additional resources to help put PRINCE2 into practice
- ✓ PRINCE2 Foundation and Practitioner exam simulators
- ✓ PRINCE2 process map
- ✓ Official PRINCE2 manual
- ✓ PRINCE2 Foundation and Practitioner exams

In partnership with



Exams

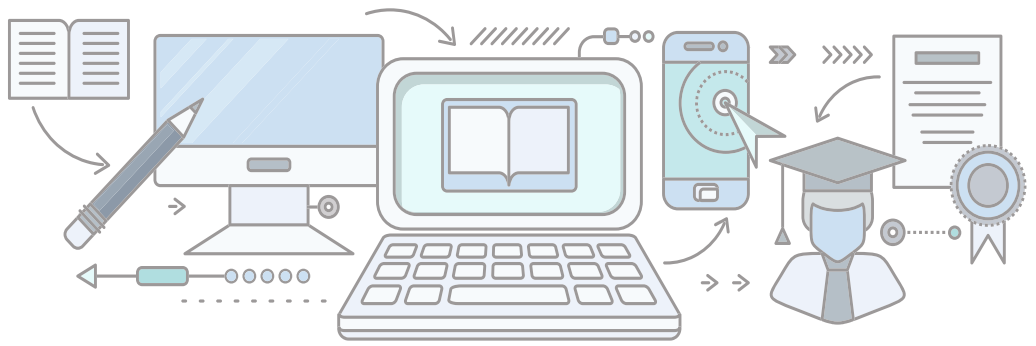
The format of the Foundation exam is as follows:

- 60 questions
- 33/60 required to pass = 55% pass mark
- Closed book

The format of the Practitioner exam is as follows:

- 150 minute exam duration
- 68 questions
- 38/68 required to pass = 55% pass mark
- Closed book

Exams are taken online via remote proctor.



Course Components

PRINCE2 Foundation

Foundation Themes

- Business case
- Organisation
- Plans
- Risk
- Quality
- Change
- Progress

Processes

- Starting up a project
- Initiating a project
- Controlling a stage
- Managing product delivery
- Managing a stage boundary
- Directing a project
- Closing a project
- Process walkthrough

Exam simulator

- Featuring sample questions from the PRINCE2 Foundation examination

Case study

- Examples of a PRINCE2 project
- Printable PRINCE2 documents

Plus...

The PRINCE2 template manager

- Introduction and exam technique
- PRINCE2 Principles

PRINCE2 Practitioner

PRINCE2 Themes

- Business Case
- Organisation
- Plans
- Risk
- Quality
- Change
- Progress
- Plus activity based case study

Processes

- Starting up a project
- Initiating a project
- Controlling a stage
- Managing product delivery
- Managing a stage boundary
- Directing a project
- Closing a project

Plus...

PRINCE2 walkthrough

PRINCE2 Practitioner exam simulator

Practitioner sample papers

The PRINCE2 template manager

- A comprehensive collection of document templates to kick-start your implementation of PRINCE2

All PRINCE2® Foundation and Practitioner courses on this page are offered by ILX group an ATO of AXELOS Limited. PRINCE2® is a registered trademark of AXELOS Limited, used under permission of AXELOS Limited. All rights reserved.

Enrol today

Commence your Monarch Institute course today to take the next step forward in your career.

Education for
the real world

 1300 738 955

 info@monarch.edu.au

 www.monarch.edu.au

