

TLI50221

# Diploma of Logistics

- > Get the skills that employers really want.
- > Unrivalled support. Delivered with care.
- > Absolute flexibility. Your way, your terms.



NATIONALLY RECOGNISED  
TRAINING

RTO: 22530

# Be part of the industry that keeps the Aussie economy running

Monarch Institute is the first Registered Training Organisation (RTO) in Australia to offer a fully supported online Diploma of Logistics certified by the Chartered Institute of Logistics Transport Australia (CILTA). What's more, rolling enrolments mean you can start at anytime. Without tricky prerequisites. That's because we get it. We know what it's like to be working in transport and logistics – it's a 24/7 kind of deal.

Our trainers are logistics professionals with decades of combined experience. Like Dave O'Flynn, who has worked in palletised, dry bulk, fuels, medicals and sea freight over his 25+ year career. Dave and his team will help make sure that you graduate with real-world skills – not just a piece of paper. Whether you're changing careers or stepping up in your organisation, you'll love studying with Monarch Institute.

## What does the course cover?

- Supply chain logistics
- Safety & operational procedures
- Monitor & lead people performance
- Logistics business management
- Transport logistics

## Key benefits

### Nationally recognised

The Diploma of Logistics is nationally recognised under the Australian Qualifications Framework. This means you can use it as a pathway to university qualifications around Australia.

### CILTA certified

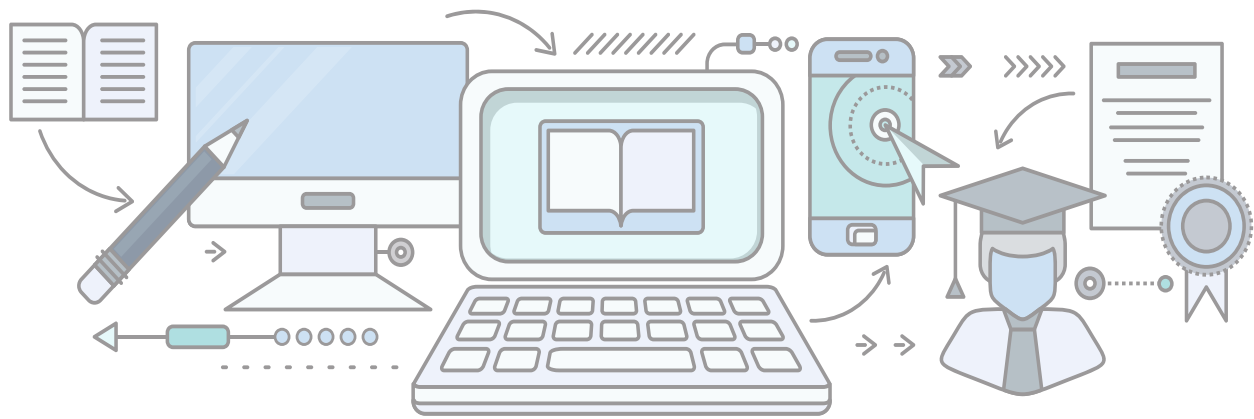
This is the only Diploma of Logistics course in Australia that's certified by the Chartered Institute of Logistics and Transport (CILTA).

### Free software

You will receive an opportunity to become familiar with the Planimate software package as part of the course.

### Government funding

If you live in Victoria, Monarch Institute has government funded places. To see if you are eligible for a government funded place, please get in touch with one of our friendly course consultants.



## Study online. With a difference.

This course has been developed to give you absolute flexibility. Study on your couch, on public transport, on your break at work, out in the park – wherever and whenever you like. The best part is, with Monarch Institute, 'online' doesn't mean 'alone'. You'll be backed by our trainers at every step along the way. You'll get:

- Easy-to-follow course materials
- Free student edition of Planimate logistics modelling software
- Videos and webinars
- Heaps of support from your course trainers (phone, email, Zoom)
- A dedicated admin team on hand to guide you
- Online assessments
- Access to a student Facebook group

## What is the course structure?

This course is delivered predominantly online. This means you'll access your learning and assessment resources using an online portal plus textbooks. You can access the portal anywhere and anytime.

You'll need to study a total of 15 nationally recognised units, which are spread out over five modules.

We consistently receive feedback from our students telling us the course is very well structured and easy to follow. Of course, if you're having trouble wrapping your head around a concept or assessment piece, you can always reach out to your trainer for support.

## What is the course duration?

This course is designed to be completed within 12 months, however Monarch's training plan allows you to take up to 30 months. You're expected to complete at least one module every six months. Your completion time frame depends on your previous education, work experience, time availability and work rate. You're expected to complete at least one module every six months.

## What are the entry requirements?

There are no formal entry requirements. Just bring your drive, motivation and passion for the industry. That said, if this is your first time studying at this level, we'll need to check your levels of English and maths before you enrol. People with disabilities are encouraged and supported to apply.

## Course costs

**Monarch's courses are competitively priced.**

Check our website for the most up-to-date prices at [www.monarch.edu.au/courses](http://www.monarch.edu.au/courses) or call us on **1300 738 955**.

This training is delivered with Victorian and Commonwealth Government funding for eligible students. Please check the eligibility requirements on our website, or get in touch to discuss your funding options.

# Course modules

## Module 1 Supply Chain Logistics

- Managing supply chains
- Understanding how to manage a customer focused supply chain
- How to manage your suppliers as stakeholders

## Module 2 Safety & Operational Procedures

- What are the risks and how to tackle them
- Ensuring you are set up as a safe workplace
- Monitoring the safety of transport activities

## Module 3 Monitor & Lead People Performance

- How to manage your employee relations
- Improving your leadership skills and becoming more effective
- Undertake project work

## Module 4 Logistics Business Management

- Develop operational procedures
- Negotiate contracts
- Manage facility and inventory requirements

## Module 5 Transport Logistics

- Maintain, monitor and improve transport operations systems
- How to develop and evaluate your strategies for transport and logistics enterprises
- Summarise and apply your knowledge of logistics

# Career opportunities

## Key opportunities include:

- Logistics manager
- Supply-chain manager
- Warehouse manager
- Inventory manager
- Materials-handling manager
- Production manager
- Logistics engineer
- Logistics analyst
- Logistics coordinators
- Transportation managers
- Storage and distribution managers
- Production, scheduling and planning
- Road, Rail, Air and Sea Logistics Services



**Get the skills that employers really want.**



**Unrivalled support. Delivered with care**



**Absolute flexibility. Your way, your terms.**

# Industry insights



Employment/positions projection  
**6.5% growth to 2024**



Earnings (average full time)  
**\$1,457 per week**



Flexibility  
**24/7 opportunities –  
logistics never stops!**

## Transport and logistics: Australia's powerhouse

Without transport and logistics professionals, Australia's economy would slow to a crawl. And those folks are going to be even more important in future. According to the Australian Logistics Council, the quantity of goods being shipped to, from and across Australia will triple by the year 2050. Government stats suggest the sector is responsible for nearly 5% of GDP. That's just under \$80 billion a year!

There's plenty of room for productivity improvement, too. The Aussie transport and logistics sector is still about 10% less productive than our average global competitor. But exciting technology, such as automation solutions, is changing the face of logistics all over the world. You could be part of the innovation that makes Australia a world leader in years to come.

Sources: Job Outlook, Labour Market Information Portal, Employment Projections



# Why choose Monarch Institute?

**You need a different learning experience.  
We're ready to deliver.**

## Expertise

- ✓ Courses developed with leading academics and industry associations
- ✓ Delivered by brilliant trainers who work with corporate leaders
- ✓ Learn from professionals using real world case studies

## Flexibility

- ✓ Fit study around work, family, life
- ✓ Start immediately, or down the track
- ✓ Flexible payment options

## Support

- ✓ Dedicated team of trainers and support staff on hand to guide you
- ✓ Up to date, easy to understand course materials
- ✓ Assessment turnaround in 5-7 business days with comprehensive trainer feedback

## Enrol today

Commence your TLI50221 Diploma of Logistics with Monarch Institute today to take the next step forward in your career.



To discuss the course that's right for you call  
**1300 738 955**



To find out more information email  
**info@monarch.edu.au**



To enrol, visit our website  
**www.monarch.edu.au**

